

# Guidelines to Attend Outdoor Worship at Grace

Register at [peopleofgrace.org/july-worship](http://peopleofgrace.org/july-worship)

*Our Worship in the Field will be held on Sunday, July 5, at 10:30 a.m. in the field and lower parking lot at Grace.*

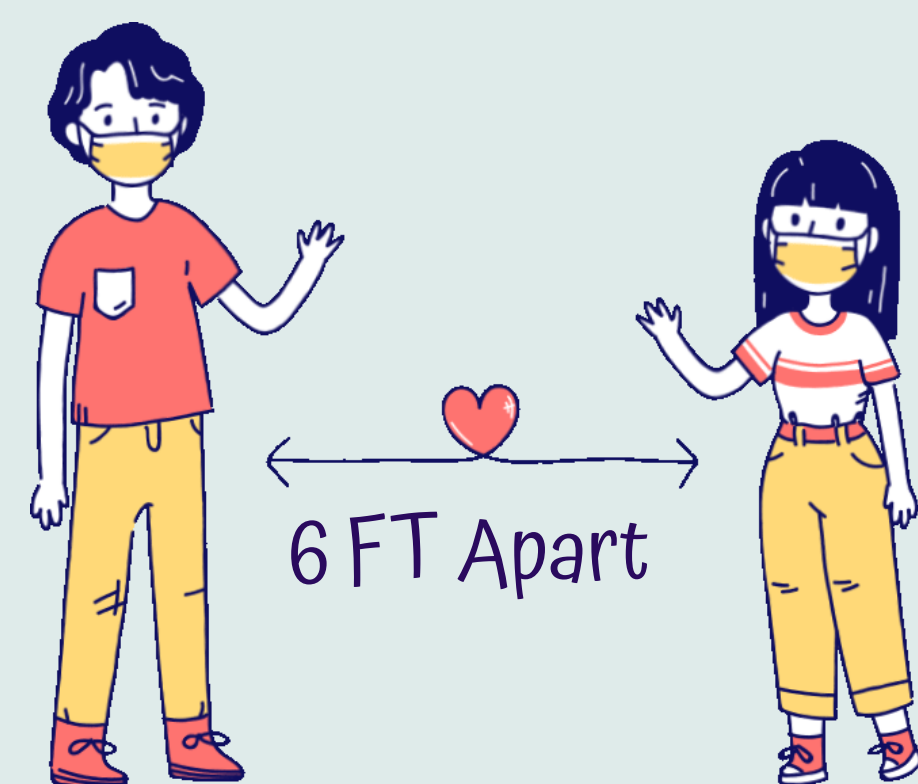
## Registration is Required

We will be limited to 100 people in attendance who are seated at the service. We are hoping to livestream the service for everyone via Facebook. You may remain in your car with a cellular-enabled device to view the service if you desire, but wifi will not be available at the church.

Register at [peopleofgrace.org/july-worship](http://peopleofgrace.org/july-worship)

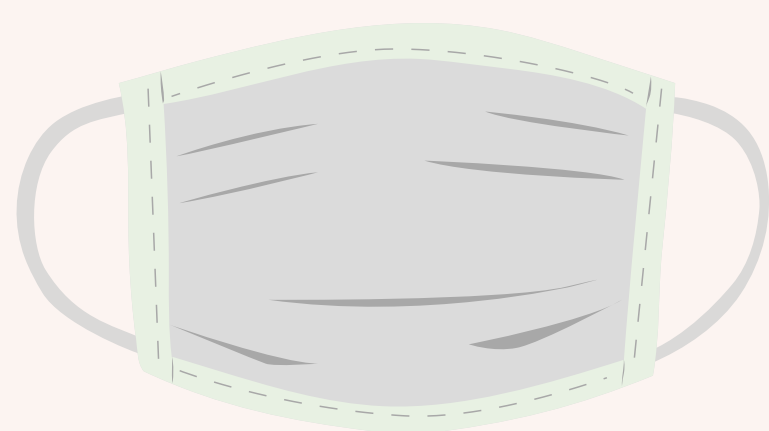
## Practice social distancing.

Everyone must maintain at least 6 feet distance between yourself and others at all times. Our worship leaders will sing, but from a distance of over 25 feet, well over that considered to be safe outdoors.



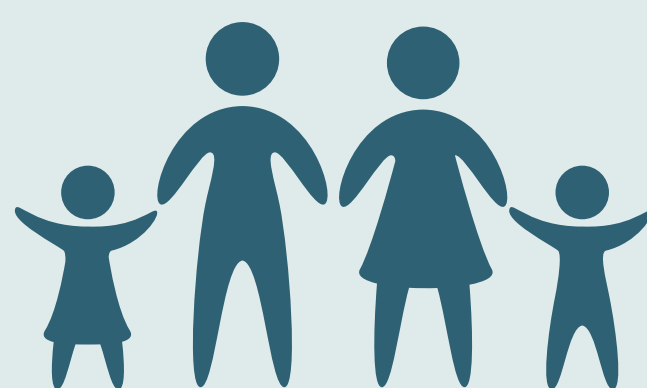
## Mask Must Be Worn

All in attendance over the age of 2, who are physically able, must wear a mask that covers your nose and mouth at all times.



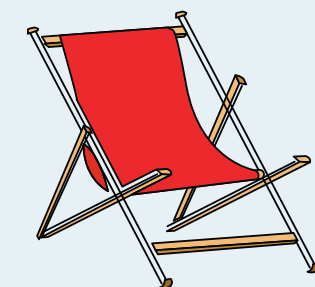
## Children must remain with their families.

To maintain social distancing guidelines all children must stay with their families at all times. The playground will not be open.



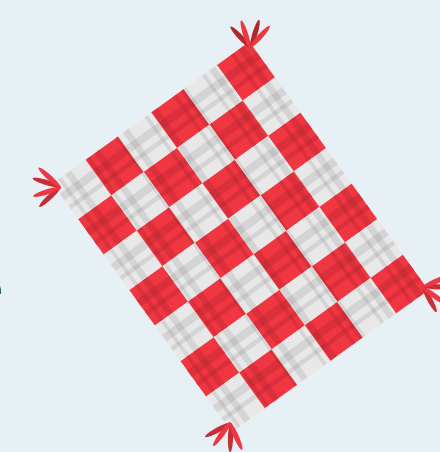
## Bring your own seating

We will gather for worship in the field next to the Lower Parking Lot with ample room for distanced seating. Bring your own chairs, blankets, umbrellas, hand sanitizer, water, bug spray, etc.



### Accessible Seating

Accessible seating space will be available in the Lower Parking lot for those unable to access the field. Those using this area may also remain in their cars if desired.



## Restrooms

Single person restroom will be available using the Fellowship Hall Entrance



## Parking

Parking will be available in the Main and Upper Lots. Lower Lot parking will be reserved for those with accessibility concerns. Please enter at the Main Lot entrance and follow the volunteer's directions.

